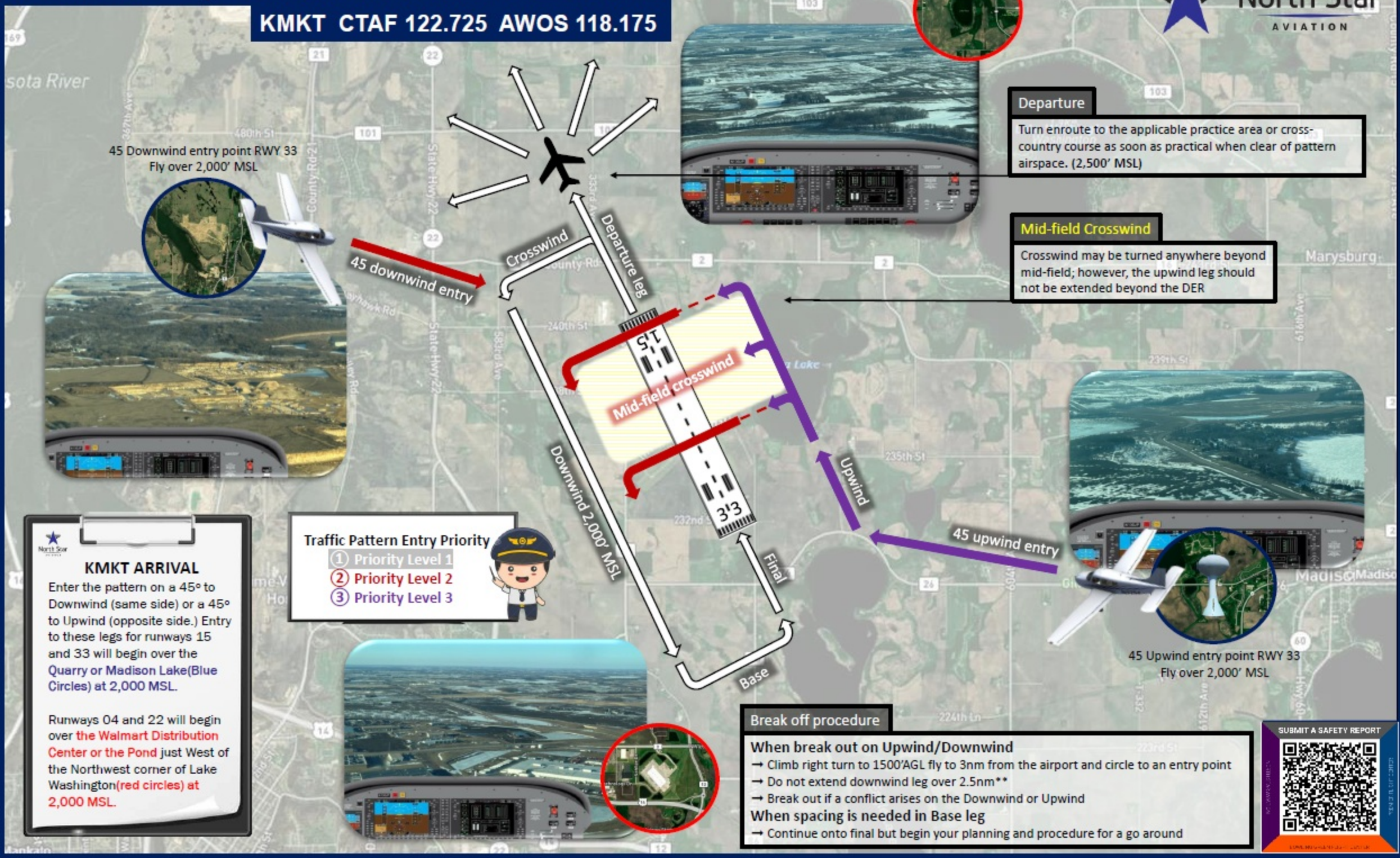


Mankato-Specific Pattern Procedure

KMKT CTAF 122.725 AWOS 118.175



Departure
Turn enroute to the applicable practice area or cross-country course as soon as practical when clear of pattern airspace. (2,500' MSL)

Mid-field Crosswind
Crosswind may be turned anywhere beyond mid-field; however, the upwind leg should not be extended beyond the DER

KMKT ARRIVAL
Enter the pattern on a 45° to Downwind (same side) or a 45° to Upwind (opposite side.) Entry to these legs for runways 15 and 33 will begin over the Quarry or Madison Lake (Blue Circles) at 2,000 MSL.

Runways 04 and 22 will begin over the Walmart Distribution Center or the Pond just West of the Northwest corner of Lake Washington (red circles) at 2,000 MSL.

Traffic Pattern Entry Priority

- 1 Priority Level 1
- 2 Priority Level 2
- 3 Priority Level 3

Break off procedure

When break out on Upwind/Downwind

- Climb right turn to 1500'AGL fly to 3nm from the airport and circle to an entry point
- Do not extend downwind leg over 2.5nm**
- Break out if a conflict arises on the Downwind or Upwind

When spacing is needed in Base leg

- Continue onto final but begin your planning and procedure for a go around

SUBMIT A SAFETY REPORT